



GETTING STARTED WITH PROFILE™

Profile™ is a web based data acquisition and control system that is designed to monitor a wide range of RTUs over diverse network topologies. Profile™ is part of the Metrology™ suite. It can be used as either a standalone application or alongside with other applications in the Metrology™ suite.

The Metrology software suite consists of three other applications:

Record™ - web enabled metrology logbook

Calibrate™ - web enabled metrology asset calibration

Inspect™ - web enabled audit management and reporting

At the heart of all Metrology products is Inventory™, an asset register that maintains a record of system equipment and locations. Metrology products can be used as standalone applications or Inventory™ data can be shared between the applications, enabling multiple metrology management processes to be monitored simultaneously across a single system or group of systems.

This document discusses how to install the standalone version of Profile™. To install Profile™ as part of the Metrology™ suite please see the document "Getting Started with Metrology™".

Before You Start

Before you start you will need to obtain an IP address for the Profile™ application from your network administrator.

Support

Ambrit provides comprehensive support for Profile™. If you require assistance while you are setting up Profile™ you can contact Ambrit in the following ways during UK office hours:

Telephone: +44 (0) 1442 866294

Email: support@ambrit.com

AIM: [ambritsupport@mac.com](aim:ambritsupport@mac.com)

MSN: ambritsupport

Skype: ambritsupport

Downloading Profile from the Internet

Download the Profile™ application from the Internet.

Profile™: <http://www.ambrit.com/profile/download>

The application will be downloaded as a .zip file. Unzip the .zip to begin the installation.

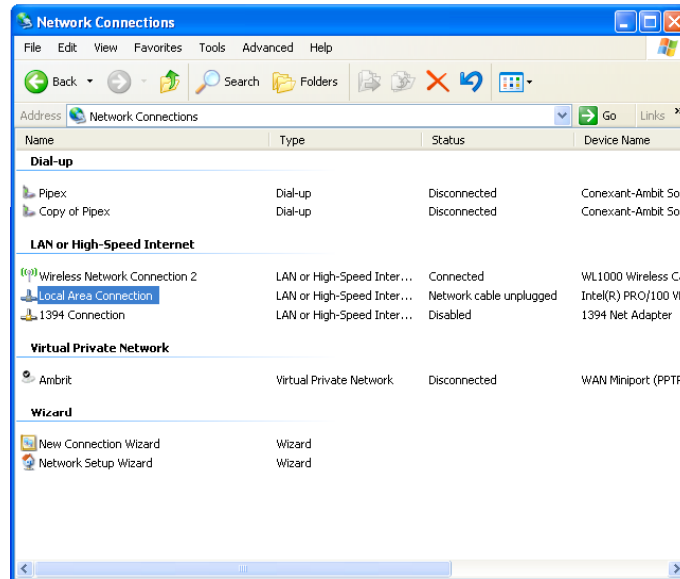
Installing Profile from CD

Please contact Ambrit if you would prefer to install Profile™ from CD.

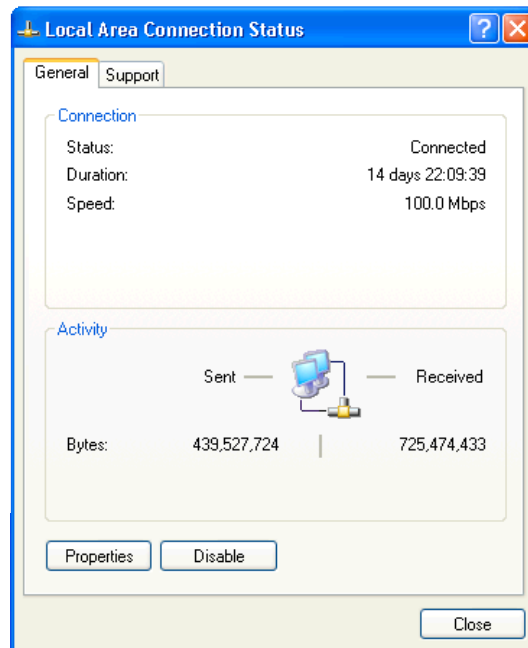
Setting up the Server

Profile™ requires a dedicated IP address.

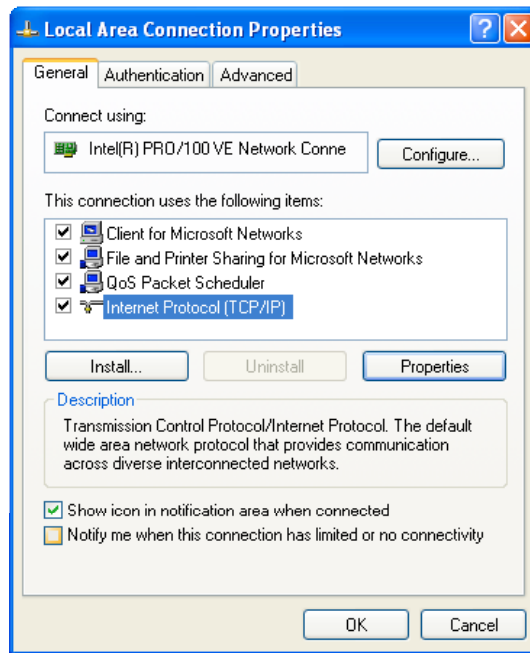
To add an IP addresses, go to the Control Panel: Select 'Network Connection':



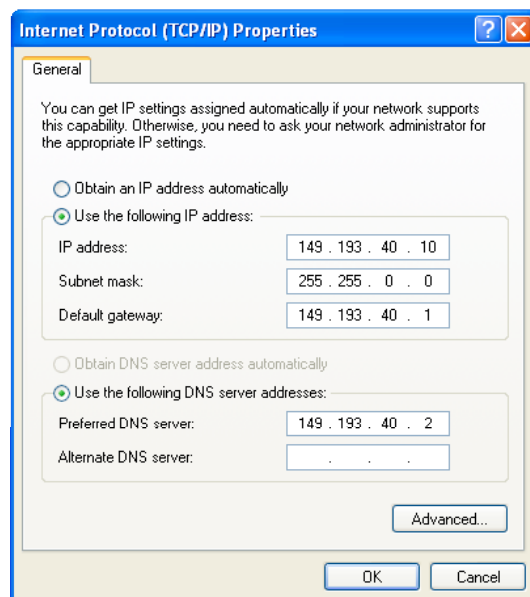
Choose your network connection. This will normally be the Local Area Connection.



Click the 'Properties' button.



Highlight Internet Protocol (TCP/IP) and click 'Properties'.



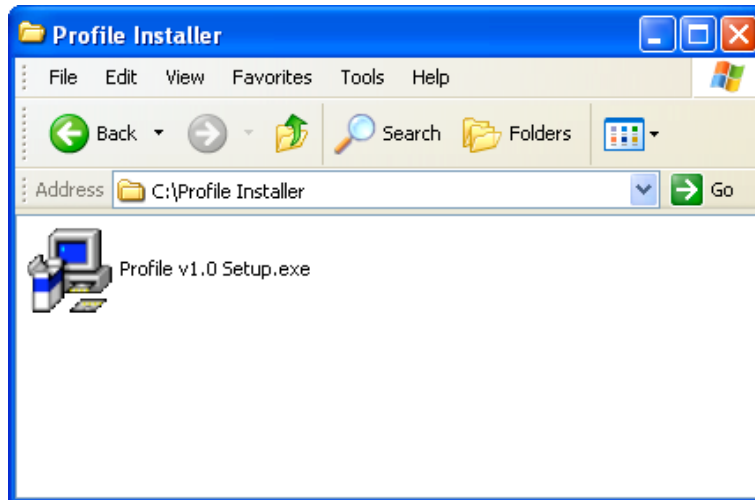
Select 'Use the following IP address' and enter your IP address, Subnet mask and Default gateway for one of the applications. Your network administrator will be able to give you the IP details needed for this screen.

Click 'OK' to the Internet Protocol (TCP/IP) Properties window.

Click 'Close' to the Local Area Connection Properties window.

Installing Profile

There is a separate installer for each application in the Metrology suite.



Double click on the installer. The first installer screen will show the welcome screen.

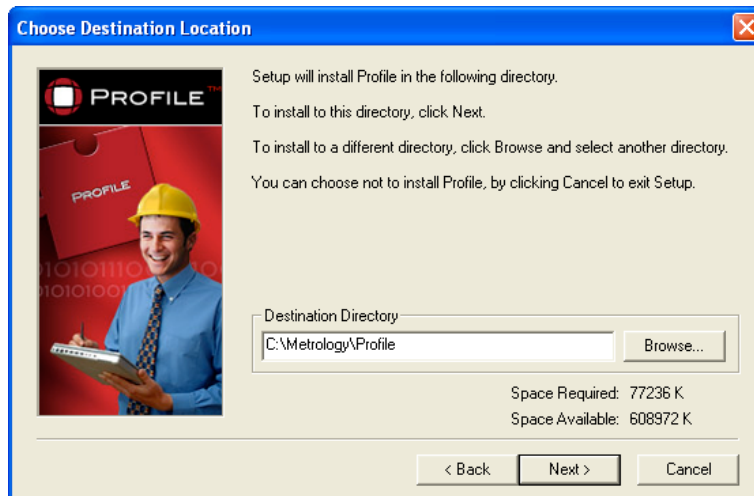


Click 'Next'.

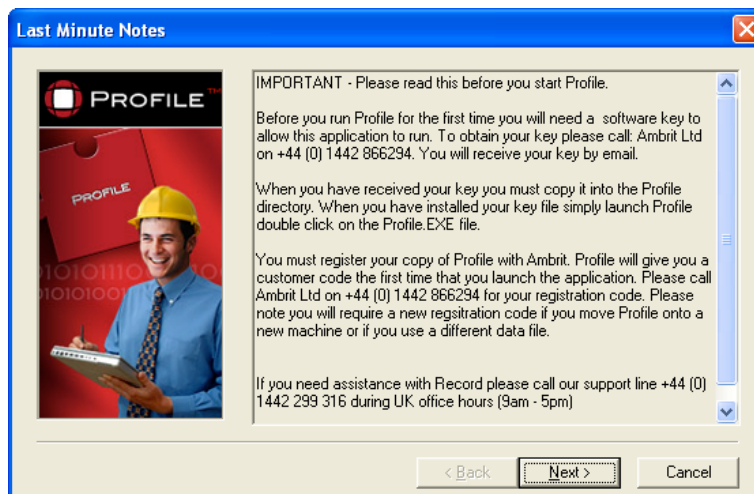


Click 'Next' again.

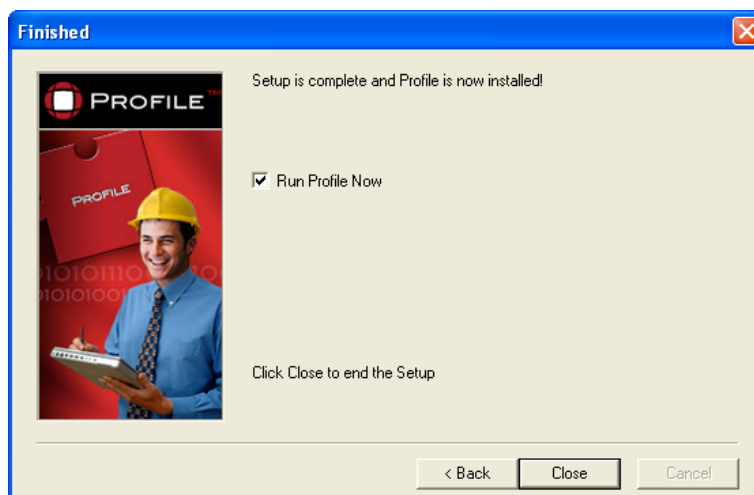
Choose the destination folder. It is highly recommended that the default directory is used.



Click 'Next'. The installer will now install the application.



Read the instructions and click 'Next'.



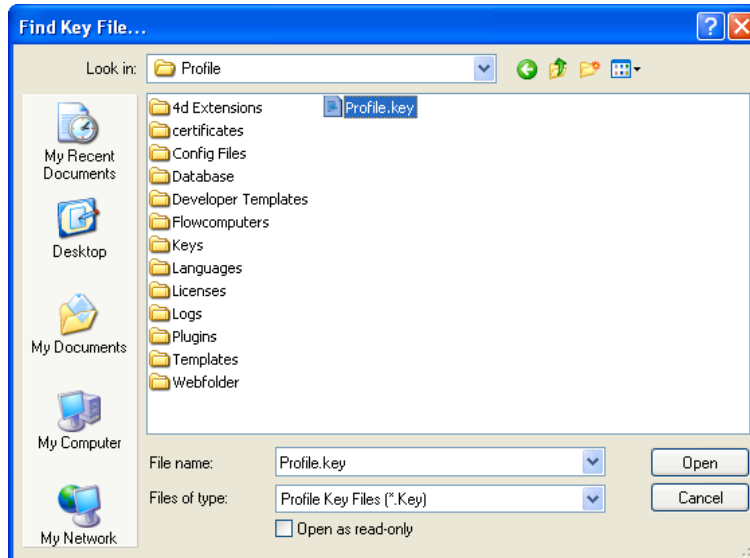
Ensure that the 'Run Calibrate Now' checkbox is ticked and click 'Close'. This will automatically launch the application.

Obtaining a Key

A key file is required for each Metrology application. A key file will normally have been issued with your order for Metrology. Demonstration key files are also available on request.

If you haven't received your key file yet, please go to <http://www.ambrit.com/metrology/keyrequest/> to request your key file.

The key file registers the application for your use and unlocks certain application specific features.



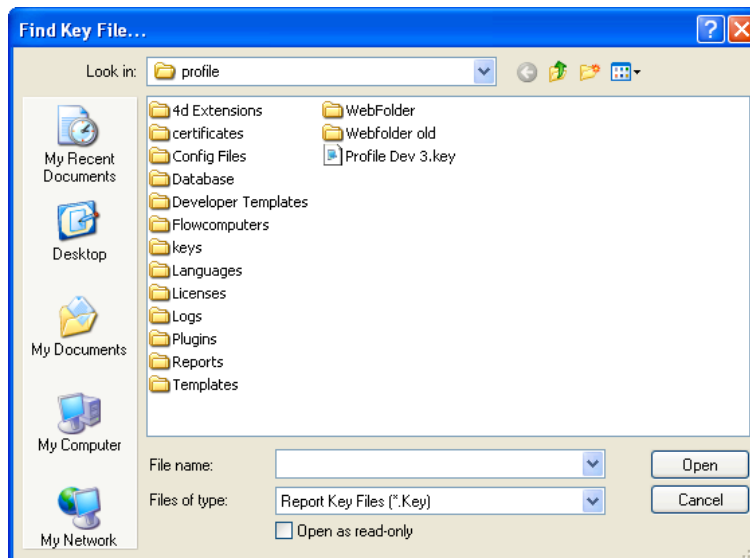
Key files should be copied into each application folder. eg C:\Metrology\Calibrate

Running a Metrology Application for the First Time

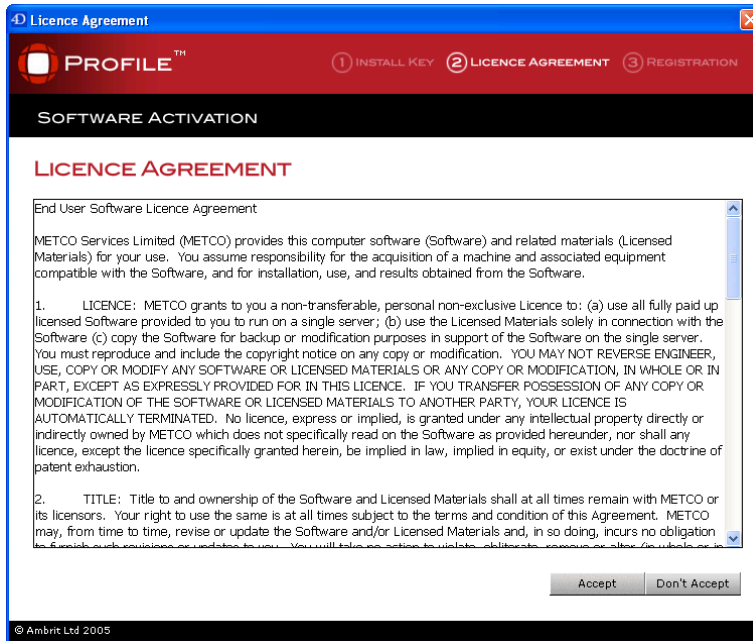
The first time that a Metrology application is run it will check that a valid key has been installed. If it is unable to find one then the user will be prompted to locate the key.



Click 'Install' to install the key.



Locate the key file and click 'OK'.

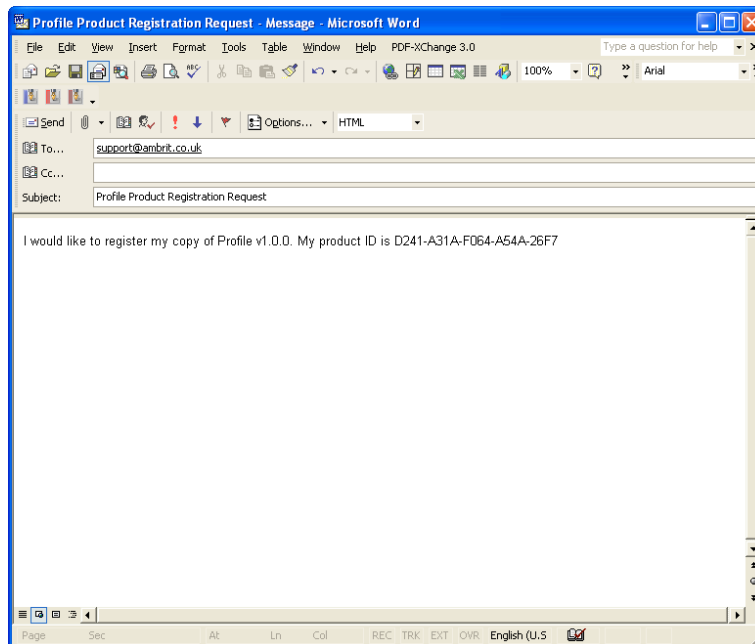


Click 'Accept' to accept the licence agreement.

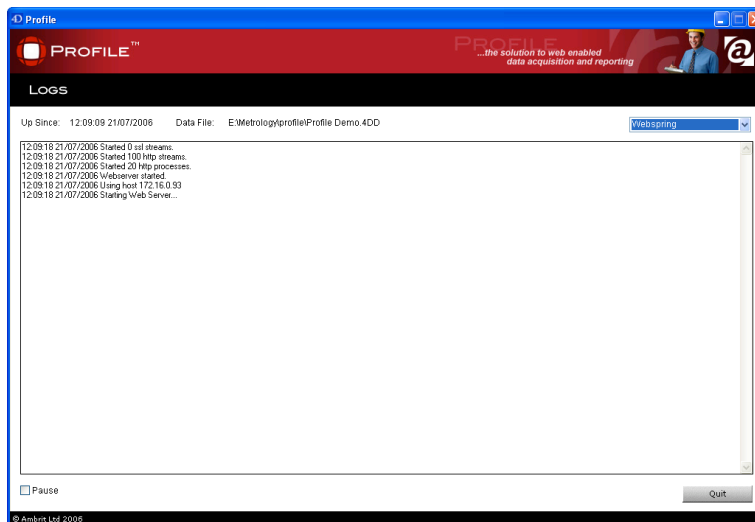


The next step is to register your application. Contact Ambrit Ltd on +44 1442 866294 for your registration code.

Alternatively click on 'Click Here' to automatically create a mail with your registration code:



Once you have your registration code enter in to the registration screen.



If you have entered a valid registration code the server will then startup and your application is up and running.